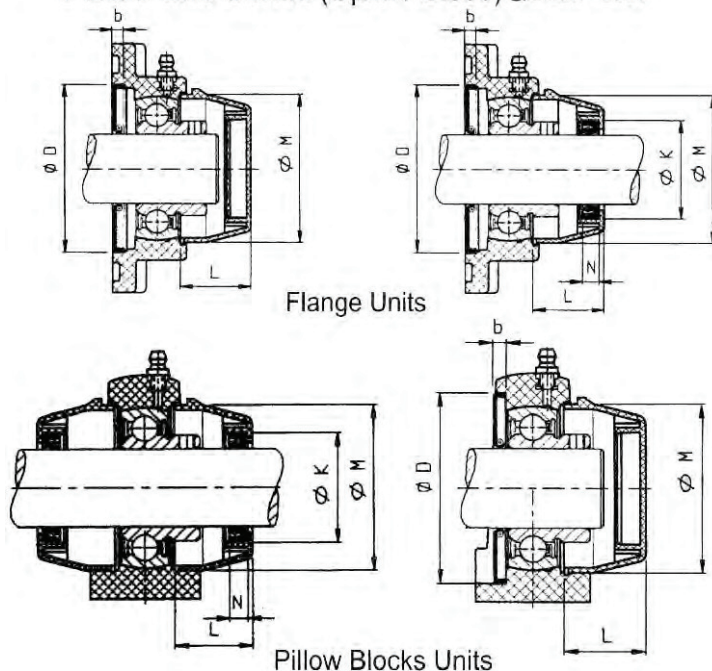


Shaft Dia Inch	Back Seal Part No.	Dimensions		Open Cover Part No.	Closed Cover Part No.	Dimensions			
		D	b			K	N	L	M
3/4	BS 204	52	6	C1 204	D1 204	32	7	23	50
1	BS 205	62	6	C1 205	D1 205	37	7	25	55
1 1/4	BS 206	72	6	C1 206	D1 206	42	7	30	64
1 1/4	BS 207	82	6	C1 207	D1 207	47	7	32	74.5
1 1/2	BS 208	88	6	C1 208	D1 208	52	7	37	84

all dimensions in mm

Plastic and Covers (Open / Close) & Back seal



Material Specifications

Description	Material
Inner & Outer Rings	AISI 440C Stainless Steel
Balls	AISI 440C Stainless Steel
Cage	AISI 304 Stainless Steel
Lubrication	Food industry grade
Seals	Nitril Rubber
Slinger	AISI 304 Stainless Steel
Set Screw	AISI 304 Stainless Steel
Housings	Thermoplastic
Grease Nipple	AISI 304 Stainless Steel
Temperature Range	-20 C +120 C

FK Thermoplastic Housings are made with high-grade glass-filled thermoplastic polyester and they are completely interchangeable with conventional cast housings. These maintenance-free housings excellent mechanical strength and stiffness, and of course will never rust or corrode. Where high standards of cleanliness are important, such as food and food handling industries, the smooth surfaces are much more hygienic than those of SS or cast iron housings. Surfaces can harbor objectionable dirt, mold bacteria. Thermoplastic is also non-magnetic, with a tensile strength of 17,300 psi.

